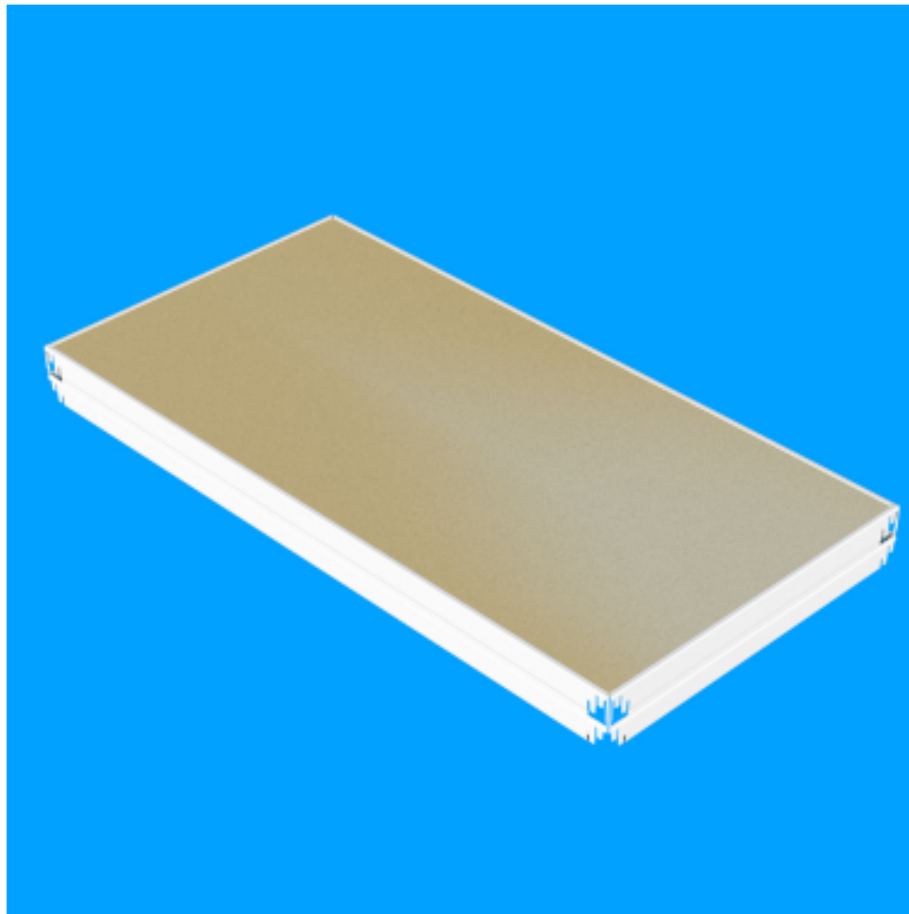




set of shelves for series N4 265, 900x450

Kód: X40904511L

EAN13: -



Product gallery:





Product short description:

900x450 mm, capacity 265kg

Product description:

This set contains a chipboard shelve, 2x side part, 2x front part and 2x reinforcement clamp. Manufactured from quality steel sheet with epoxy powdered coating. The maximum capacity equally spread per shelve is 265kg. The set is compatible with the shelving system series N4/265.



Product features:

| | |
|----------------------|-------------|
| width mm | 900 mm |
| depth mm | 450 mm |
| weight kg | 3.6 kg |
| materiál police | DTD |
| nosnost police regál | 265 kg |
| typ regálu | Bezšroubové |
| šířka regálu | 900 mm |

Product attributes:

Product accessories: