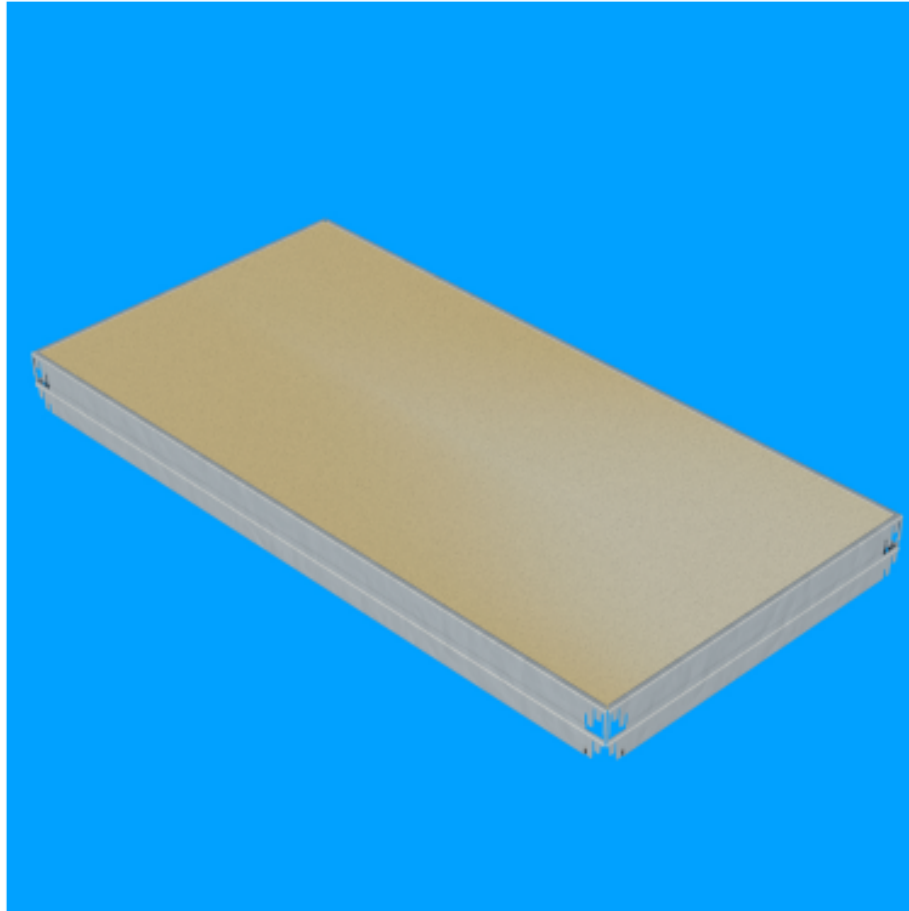




set of shelves for series N4 265, 900x450

Kód: X40904511Z

EAN13: -



Product gallery:





Product short description:

900x450 mm, capacity 265kg

Product description:

This set contains a chipboard shelve, 2x side part, 2x front part and 2x reinforcement clamp. Manufactured from quality steel sheet with epoxy powdered coating. The maximum capacity equally spread per shelve is 265kg. The set is compatible with the shelving system series N4/265.



Product features:

width mm	900 mm
depth mm	450 mm
weight kg	3.6 kg
materiál police	DTD
nosnost police regál	265 kg
typ regálu	Bezšroubové
šířka regálu	900 mm

Product attributes:

Product accessories: